

*High performance
Energy efficiency!*

3
years
warranty



Efficiency up to **107%**

Power Adjustment 1:5

Class
NOx 6

A



 **Savio**
INOXDENS HE

Wall-Mounted
Condensing Boiler



Technical Characteristics Brochure

www.tzanos.gr





INOXDENS HE

INOXDENS HE is the new Savio wall-mounted condensing boiler

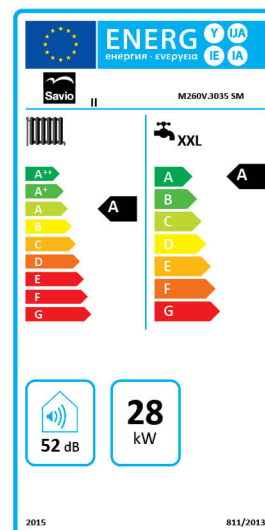
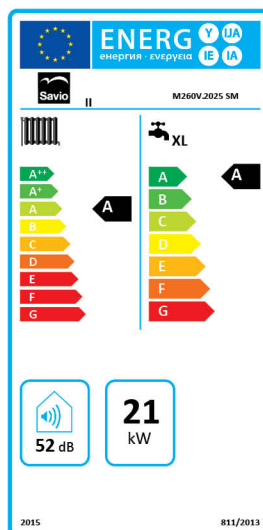
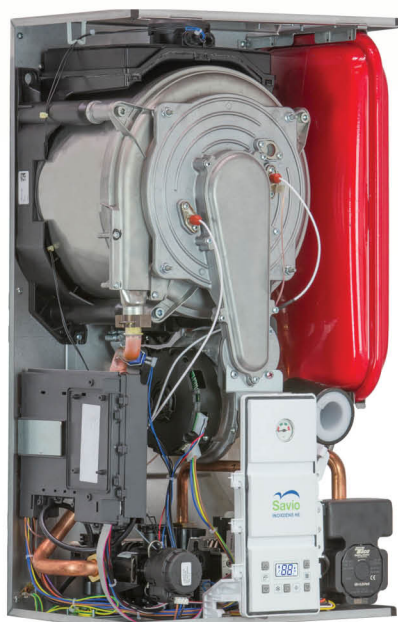
offering excellent performance thanks to the new, innovative heat exchanger designed to provide **high efficiency with low power consumption**. Its user-friendly widescreen digital control panel is very simple and easy to use. Models are available exclusively for heating and / or for domestic hot water (DHW).

The INOXDENS HE series features a complete range of boilers: the combi models with a 21 kW and 29 kW output and SV models with a 17 kW to 29 kW output, maintaining its particular small dimensions (700 x 400 x 290 mm).

Like all **Savio** condensing boiler models, the INOXDENS HE series saves even more energy using offset, achieved when connecting to the external sensor (optional).

Basic Characteristics

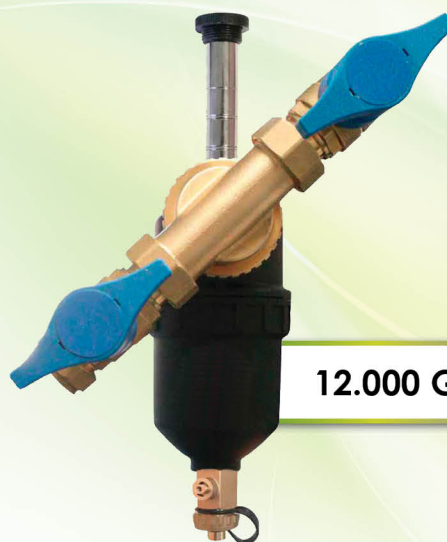
- Power adjustment to seasonal output 1:5 Methane and LPG
- Stainless steel total premix burner (Class NOx6)
- Stainless steel primary condensing exchanger with steel casing for maximum corrosion resistance
- High efficiency (★★★★ according to 92/42 / EEC European Directive and 311/06 Legislative Decree)
- High classification for Domestic Hot Water (★★★ EN 13203)
- Stainless steel plate-fin hot water exchanger
- 7 litre expansion vessel
- High efficiency **Inverter** technology pump and low energy consumption
- Maximum power adjusts according to the needs of each installation
- Protection Degree: IPX5D
- Can be installed in partially protected space
- Can be combined with solar systems using a special set
- Digital control panel with rear screen lighting
- Analog pressure regulator
- A wireless control can be installed in the case of multiple zones



* When purchasing and installing the Savio particle separator with magnetic filter. Covers the warranty for all wall fittings and extends the guarantee +1 year.

Savio Magnetic Brass Filter

- Essential accessory for new or existing installation
- Retention of particles and debris by vertical or horizontal installation
- Strong magnetic field 12,000 Gauss with detachable magnet
- Includes two (2) 3/4" shut-off valves and a purge valve
- Up to 12 bar, 120°C



12.000 Gauss

Primary Heat Exchanger

Savio launches to the Greek market the new **Round** stainless steel heat exchanger for condensing boilers.

Round is a heat exchanger with a stainless steel coil and oval cross-section.

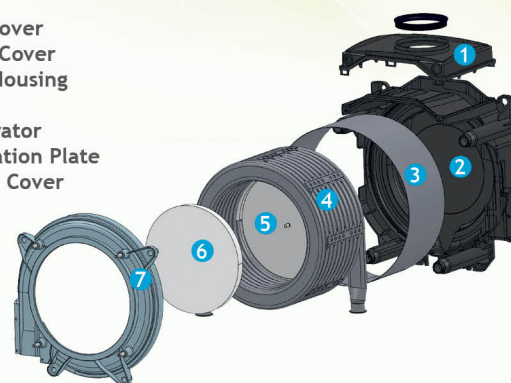
Using a single stainless steel spiral for coil production, including Input / Output connections, the following **benefits** are offered:

- Accumulation of dirt and other residues is avoided
- Water is evenly distributed, ensuring homogeneous thermal exchange
- Water supply is kept constant
- Reduced pressure drop due to optimized circuit

Easy cleaning as well as the robustness of the heat exchanger are indisputable points of the superiority of this product.

The Round heat exchanger integrates the circular flow function (round flow), through which the water of the circuit develops centrifugal cleaning action of the single spiral inner walls. The absence of parallel circuits ensures easy cleaning of the heat exchanger and contributes to the elimination of any air within the installation circuit.

1. Top Cover
2. Back Cover
3. Coil Housing
4. Coil
5. Separator
6. Insulation Plate
7. Front Cover



8. Single Helical Oval (Round) Cross Section Spiral
9. Heating Water Return
10. Evacuation of Condensates
11. Heating Water Supply

10
years
warranty



Control Panel

- Summer / Winter ON / OFF mode selection
- Heating Temperature Adjustment
- Hot Water Temperature Adjustment
- Proportional Pressure Indication
- Digital Temperature Hot Water & Heating Indication
- Auto-diagnosis, Blocking Position & Damage Record Display
- Instructions & Indication of Recommended Filling
- Annual Maintenance Reminder & Expiration Indication

The screen features the following functions:

INFO

- Outdoor Temperature (requires installation of external sensor)
- Exhaust gas temperature

PROGRAMMING

Programming function allows configuration of the boiler.

- During the exhaust system operation the Boiler can be tested and the Gas Valve can be adjusted
- K-value ** Adjustment
- Choice of Hot Water & Heating Temperature

** K-value: Rate monitoring offset.



TECHNICAL CHARACTERISTICS						
INOXDENS HE		16 SV	25 S	25 SV	35 S	35 SV
Rated Thermal Power - Heating/Hot Water	kW	17,0/ 17,0	21,0/ 26,0		29,0/ 33,5	
Minimum Thermal Power - Heating / Hot Water 80°/60°C	kW	5,1	5,1		7,5	
Maximum Net Power Output - Heating/Hot Water 80°/60°C ¹	kW	16,5/ 16,5	20,3/ 25,1		28,2/ 32,5	
Minimum Net Power Output - Heating/Hot Water 80°/60°C ¹	kW	4,8	4,8		7,0	
Maximum Net Power Output - Heating/Hot Water 50°/30°C ²	kW	18,1/ 18,1	22,4/ 22,4		31,1/ 36,0	
Minimum Net Power Output - Heating/Hot Water 50°/30°C ²	kW	5,3	5,3		7,8	
Amount of Concentrates in Rated Output 50°/30°C (Heating) ²	lt/ h	2,7	4,2		5,4	
Amount of Concentrates in Minimum Output 50°/30°C (Heating) ²	lt/ h	0,8	0,8		1,2	
Concentrates pH				4,0		
Rated Output 80°/60°C ¹	%	96,9	96,6		97,4	
Minimum Output 80°/60°C ¹	%	93,3	93,3		93,9	
Rated Output 50°/30°C ²	%	106,4	106,8		107,4	
Minimum Output 50°/30°C ²	%	103,9	103,9		104,6	
Output at 30% of the Load ²	%	107,6	107,6		107,4	
Energy Class			★★★★			
Heat Loss to Exhaust System with Burner ON	Pf (%)	1,6	1,8		1,6	
Heat Loss to Exhaust System with Burner OFF DT 50°C	Pfbs (%)		0,2			
Heat Loss from Housing to the Environment with Burner ON	Pd (%)	1,5	1,6		1,0	
NOx Class	Apiθ.		6			
Weighted NOx ³	mg/ kWh	36	45		47	
Minimum / Maximum Heating ³ Temperature	°C		25/ 80			
Minimum / Maximum Heating Pressure	bar		3,0/ 0,3			
Available Heating Head (1000lt/h)	bar	37,0	37,0		34,0	
Expansion Vessel Tonnage (Gross / Useful)	lt		7,0/ 3,5			
Minimum / Maximum Hot Water Temperature	°C		35/ 60			
Minimum / Maximum Hot Water Pressure	bar	-	10,0/ 0,3	-	10,0/ 0,3	-
Maximum Output (DT=25 K)/ (DT=35K)	lt/ min	-	14,4/ 10,3	-	18,6/ 13,3	-
Special Water Supply Valve (DT=30 K)	lt/ min	-	12,0	-	15,5	-
Voltage / Input in Rated Thermal Input	V~/ W	230/ 61	230/ 99		230/ 118	
Input in Minimum Thermal Output	W		-			
Input in Stand-by Mode	W		3			
Protection Rate			IPX5D			
Minimum / Maximum Fuel Temperature ⁴	°C	43/ 68	50/ 69		49/ 78	
Minimum / Maximum Exhaust Gas Flow ⁴	kg/ s	0,0027/ 0,0077	0,0027/ 0,0118		0,0039/ 0,0152	
Minimum / Maximum Air Flow ⁴	kg/ s	0,0026/ 0,0074	0,0026/ 0,0113		0,0038/ 0,0145	
Maximum Length of Coaxial Exhaust Pipe (Ø60 / 100mm / Ø80 / 125mm)	m		10/ 10			
Maximum Length of Double Exhaust Pipe (Ø80 + 80mm)	m		40			
Height x Width x Depth	mm		700x400x290			
Weight	kg	30,5	31,0	30,5	34,5	34,0
Boiler Water Capacity	lt		2			
Fuel			Methane (G20) - Propane (G31)			

¹ Models available for methane or LPG.
² At minimum useful power.
³ According to EN 625.
⁴ Test values: 60/100 mm 1m with coaxial cable & G20 methane with 80°/60°C production / return temperature.

The company

K. TZANOS SA was established in 1982 and it is a well-established trading company specialised in the field of plumbing, heating, natural gas, and green energy, maintaining long-term partnerships with well-known European and International houses. K. TZANOS SA is operating under the umbrella of TZANOS Group of companies, while owns since 1997 ISOPIPE SA, a factory specialising in the production of insulation material ISOPIPE and TORRENT cast iron condensing boilers. In 2008, TZANOS SA created the H-IT brand aiming at manufacturing high quality-products at affordable prices, for water supply and heating systems.

All products represented by TZANOS Group of Companies are CE certified.



ΕΥΓΥΝΟΝ
ΠΟΙΟΤΗΤΑ
ΑΞΙΟΠΙΣΤΙΑ

www.tzanos.gr

ATHENS
 Nafliou & Daskalogianni
 144 52 Metamorfosi Attikis
 T: +30 210 2828603
 F: +30 210 2830436
 Email: info@tzanos.gr

THESSALONIKI
 6 Antoni Tsitsi str.
 570 08, Ionia Thessalonikis
 T: +30 2310 780001
 F: +30 2310 784009
 Email: thessaloniki@tzanos.gr